



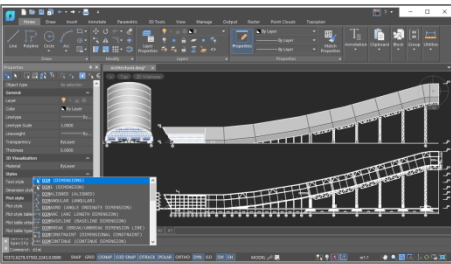
nanoCAD Platform



New in nanoCAD 24

- ✓ Layer Manager
- ✓ CAD Standards Toolbar
- ✓ Layer Translator
- ✓ Updating Functional Toolbars
- ✓ Centroid Snap
- ✓ Area
- ✓ Displaying Grid as Dots
- ✓ Updating the ETRANSMIT command
- ✓ Improving IFC Import
- ✓ Point Cloud Project Manager
- ✓ Managing Point Cloud Revisions
- ✓ Point Clouds Hiding and Displaying Commands
- ✓ Checking Connections in the Database
- ✓ Shapes in Point Clouds

Features

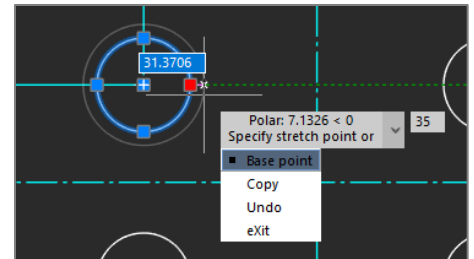


User Interface

nanoCAD's operating principles are designed to look and feel just like other well-known CAD systems. This means that any experienced designer can master nanoCAD instantly. Drawing spaces, command lines, positions of menu items, and icons are recognizable, so there is nearly no need for retraining. You can switch back and forth between the modern ribbon and classic CAD user interfaces instantly. nanoCAD's visual interface editor customizes almost every aspect of nanoCAD.

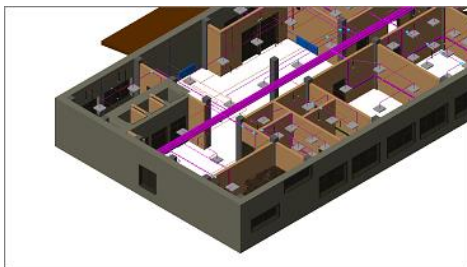
Dynamic input

Dynamic input helps you set dimensions and sizes of drawing elements, without needing to access the command line. It's heads-up drafting with pointer input, dimension input, and dynamic prompts. Dynamic input is available for creating and editing objects, which greatly simplifies working with drawings.



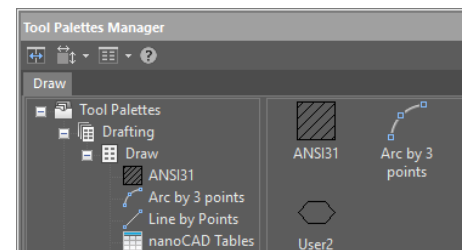
IFC support

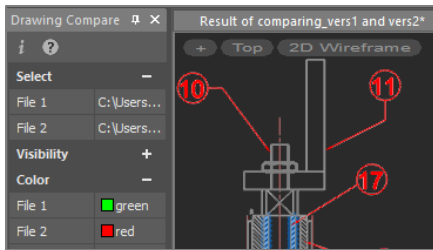
nanoCAD can import IFC files into a DWG document. It is possible to perform numerous operations on imported BIM objects, such as to compile reports on models created in BIM-systems. Add to this updated tool for 3D navigation in parallel & perspective projection, adaptive zoom, camera and observer head rotation, accelerated performance in saturated 3D models - and you will get a universal IFC-viewer based on DWG and BIM-models.



Tool palettes

Tool palettes give you fast, easy access to your most-used commands and blocks. Organizations can define their own sets of standard blocks, hatches, and scripts and then load them on all workstations to access them with a single click.



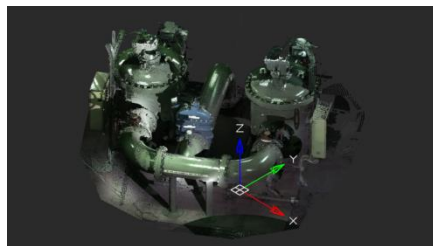
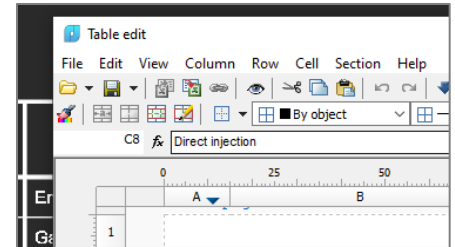


Drawing Comparison

nanoCAD allows you to find differences between two similar-looking drawings in model space. It detects objects that have been modified, added, or removed from drawings being compared.

Powerful Excel-style table editor

nanoCAD's table editor blows away the competition with its powerful set of database-like capabilities, along with tables that embed macros and formulas in cells.



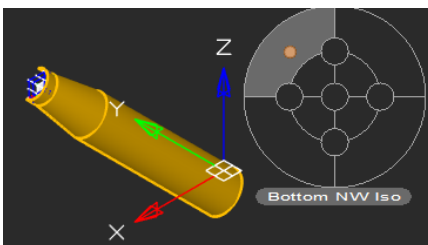
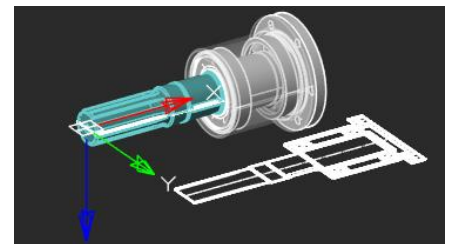
2D/3D Point Clouds

nanoCAD imports point clouds into drawings from laser scanners like TerraSolid (bin), ASPRS (las), & Leica (ptx and pts), as well as generic point cloud files (pcd). The Import dialog box is powerful enough to import only the regions of clouds you need. You can create and modify clouds with sections & clips, & tune visualization parameters, such as color by elevation.

Extensive Commands for Creating and Editing 2D/3D Objects

nanoCAD contains all tools necessary for design:

- Create and edit 2D and 3D objects, text, and design elements
- Adjust display settings and printing for technical documentation
- Create and use any kind of table and specifications, based on block attributes
- Set up working environments according to international standards
- View, create, and edit 3D surface objects

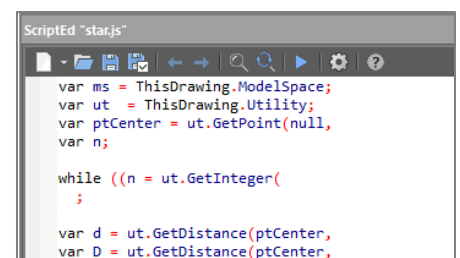


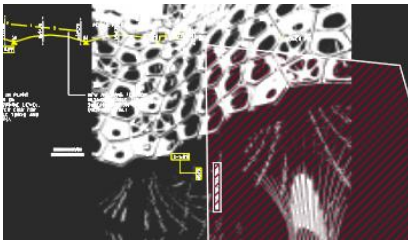
Locator Function

With the Locator tool, you interactively rotate the view of a model while holding down the Alt key, and then select any point on the locator circle, or choose one of the four marked points to rotate a view by 90 degree. The arrow points to the new view rotation position.

Scripting Engine

nanoCAD's scripting engine allows everyday users to automate routine tasks. You can write macros using Visual Basic Script, Java Script, and other scripting languages supported by Microsoft Windows as well as use the built-in LISP interpreter.



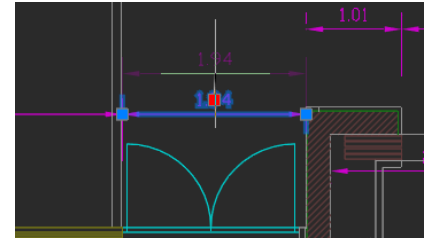


Transparency Command

The new Transparency command toggles the transparency of background pixels in raster images. Access this new command through the ribbon's Visualization group, the Raster menu, or the Raster toolbar.

Associative Design Elements

For associative dimensions and multi leaders created in other CAD systems, associativity with objects is maintained in nanoCAD. Associative links with dimensions can be broken by shifting the grips of extension lines.



Other important features

Batch Plot Tools

nanoCAD lets you set up multiple plot areas and plot multi-page sets, which is useful for printing large drawings on small-format printers. The Batch Plot command creates and prints drawing sets without requiring you to babysit the printing process.

Enhanced UNDO/REDO

nanoCAD now moves forwards and backwards through isolated and unisolated objects, affecting the standard Undo/Redo mechanism.

Enhanced External References

nanoCAD improves the External References panel so that external references can be loaded and unloaded, be bound to the current drawing, and to report updates made to xref'ed files – all without needing to reload the current drawing. The redesigned panel also completely removes external references that had been inserted in the current drawing, along with all their associated data.

Enhanced Groups

nanoCAD's object grouping tool has been reworked. Its functions are added to the context menu (right-click in the drawing), shown as individual commands in the ribbon's Group section (found in the Main tab), and to the Group toolbar.

New ways to create and modify geometric objects

nanoCAD now draws arcs (including elliptical ones) in the direction that the cursor moves. Circles can be drawn tangent to three other objects. Ellipses and closed polylines can be broken by picking two points. Open objects can be lengthened in both directions. Spline fit points can now be edited by holding down the Ctrl key.

Relocating Base Points of Blocks

nanoCAD can change the position of base points in block definitions. The base point corresponds to the location of grips at the insertion points of block references.